



White Ral 9001  
Ref. 4335



Anthracite grey Ral 7016  
Ref. 4336

Complies with  
standard NFP 98351



Installed on marble



Installed on parquet

Perfect for warning blind and partially sighted people that a staircase is ahead, while preserving the aesthetics of the site (for ex.: historical monuments, marble floors, wooden floors, glass, Linoleum ...)

Studs in composites (nylon and glass fibre), self-coloured, fixed to the floor by means of a patented system combining:

- A self-adhesive ring for immediate adhesion.
- A special glue for long-lasting adhesion.

High resistance to wear and tear, scratching and impacts; anti-fouling. Resistance to UV light and chemical agents. Anti-slip.

Rapid and easy installation, without modifying support structure, without noise, smell or dust, and without troubling pedestrian access.



On textile



On tiles

### Can be delivered in:

- Full kit 1.20 ml x 40 cm

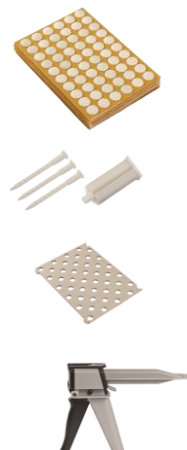
Contains:

- 180 adhesive studs. - 1 adhesive cartridge + 1 tip (for up to 360 studs)
- 1 adhesive gun
- 4 stackable cardboard templates 40 x 30 cm (width: 120 cm)

2 kits are available:

White Ral 9001 Ref. 4330 or

Anthracite grey Ral 7016 Ref. 4331



- Or separately

- Set of studs

1.20m x 40cm, packs of 180 adhesive studs

=> White Ral 9001 ref. 4335

=> Anthracite grey Ral 7016 ref 4336

- Adhesive cartridge + Tip Ref. 4341

For bonding 2.40m x 40cm, that is 360 studs.

- Set of 5 spare tips Ref 4343

- Set of 4 cardboard templates Ref. 4340

- Adhesive gun Ref. 4342

## INSTALLATION

### 1 – PREPARING THE SURFACE

A careful pre-treatment of the surface is critical for the studs to durably bond.

Surface, stud and adhesive temperature >10 °C.

The surface must be perfectly dry and clean. All traces of soap or grease should first be eliminated via an appropriate means of pre-treatment (e.g.: in the case of tiles, natural stone and linoleum, high performance universal cleaners for floors or equivalent give excellent results. A good de-greasing is essential.

Tiles, linoleum, vinyl, glass	Apply acetone or MEK* or a solution of isopropanol (if acetone or MEK* are too aggressive for the floor surface) on a clean cloth or clean paper towel. Repeat the process until the floor is completely clean. Never use cleansers containing silicones.
Smooth concrete, natural stone	Do not apply to fresh concrete. The concrete must be at least 6 weeks old. Make certain it is completely dry. Clean thoroughly with clean water. Allow to dry. If the concrete is contaminated with grease, first use a suitable de-greaser and then wash it thoroughly with water. Natural stone: Idem. Finish by cleaning with acetone or MEK* .
Porous concrete	Do not apply to fresh concrete. The concrete must be at least 6 weeks old. Make sure that it is perfectly dry and not dusty. For porous concrete, and for other porous surfaces, a suitable primer is required.
Wood - Painted surfaces	Cleaning with acetone or MEK* (perform a compatibility test in an inconspicuous place) or isopropanol solution.

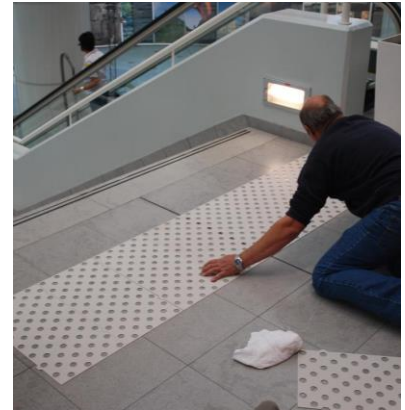
- MEK: Methyl Ethyl Ketone

## 2 - LAYING THE TEMPLATE

The size of the studs and layout of the cavities in the templates comply with the French recommendations (NF 98351).

Place the templates according to the instructions of the client or local guidelines in force, or, by default, about 50 cm (+/- 5cm) from the stair-nosing.

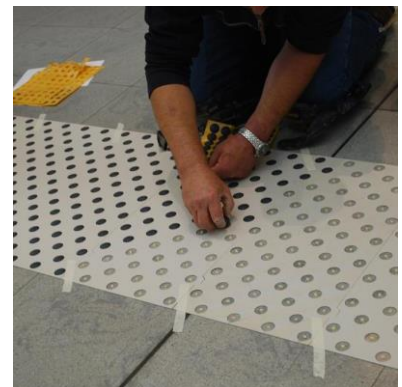
If the stairs can be accessed from the side, make sure to finish the tactile device in an "L" shape.



## 3 - GLUE APPLICATION AND PLACING OF THE

Do not use the first 10-15 cm of the glue mixture out of the tip! (contains improperly mixed product!)

Apply to the centre of each cavity of the template a touch of glue (between 30 and 40 mm<sup>3</sup> of glue) ref 4341. This corresponds to a square of 5x5x2mm. Life of the mixture: 10 to 20 minutes depending on the ambient temperature. Studs should be put in place during this period!



**Very important:** Apply heavy pressure (about 5 to 10 kg for a few seconds) on each stud. This can be done after the

### ➤ Opening the device to the public

The self-adhesive ring allows immediate resumption of traffic. However, a waiting time of 30 min is recommended. The installation system makes it easy to work in phases.

Avoid intense or sudden movements during the first 2 hours after application. Wait at least 24 hours before cleaning the surface with water.

### ➤ Disclaimer

Our information and technical advice are based on research and experience. The use and application of the product coming out of our control field, the purchaser/ user is solely responsible for the conformity of the system with respect to its intended use

# TECHNICAL SPECIFICATIONS

### General characteristics

- hardness and rigidity, warping resistance
- abrasion and scratch resistance
- wear, polishing and dirt resistance
- resistance to shocks and nicks
- chemical resistance and UV resistance
- dimensional stability

### Mechanical properties of the material

		<u>Results</u>		
Traction module (23 °C)	Index of deformation resistance	9800	MPa	
	Index of crush and puncture (print) resistance	101	Rockwell scale (M scale)	
Hardness				
Coefficient of thermal expansion (between 23° and 60°)		50x10 <sup>-6</sup>	m/(mK)	
Resistance to shocks - IZOD (un-nicked)		1500	J/m	ASTMD4812

### Physical features

Degree of flammability		HB/HB		UL 94
Flammability classification		HB		IEC 60695-11-10-20
Reaction to fire / smoke	Compliant	N/A		Report of CSTB DSSF, Division of Research on Reaction to Fire, 18/10/2011
Slip resistance (wet support)	Compliant (> 45)	54	SRT/AFPV	NF-P-98 351 NF 98 220-1

### Results of mechanical testing of the adhesive system<sup>1</sup>:

<u>Test</u>	<u>Device / method</u>	<u>Results</u>
Shearing strength (forward speed: 50 mm/min.)	Zwick Z020	> 930 N (result at rupture)
Resistance to lateral impact	VKC method	Resistance to impact energy: > 7 Joule

### Chemical resistance

- (tests performed on porcelain stoneware and vinyl):
- ⇒ Immersion
    - 15 days in water at room temperature: no effect.
    - 7 days in water with 3% household bleach: no effect.
    - 7 days in water with +/- 2% scrub soap: no effect.
    - 1 hour in pure bleach: no effect.
  - ⇒ Temperature:
    - 5 freeze-thaw cycles, dry and with immersion in water: no effect.
  - ⇒ Combined resistance to water, hot steam and aggressive detergents:
    - 20 complete cycles in the dishwasher at 65 ° C (cycle of +/- 85 min. including drying and cooling to room temperature): no effect. (EN-V 12875-1 "dish washer test ")

***Information contained in this document is indicative only. ROMUS accepts no liability in connection therewith. The user or the specifier must check the product's technical data regarding the actual situation. ROMUS reserves the right to change all or part of this document without prior notice.***

Architect:

Project:

Email:

Tel

Distributor:

Tel:

Email: